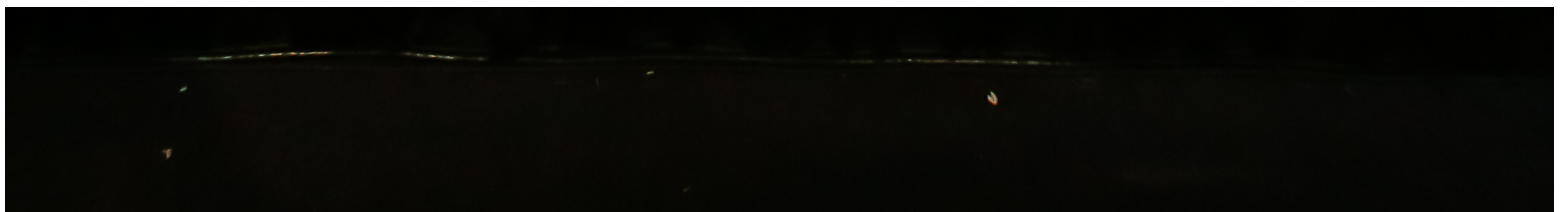


# THE PACT THEATRE COMPANY



## ADVERTISING RATES

2021-2022 SEASON





# YOUR STORY. YOUR STAGE. YOUR IMPACT.

A partnership with The PACT Theatre Company offers great perks that can help address many of your business needs. We offer sponsorship & advertising opportunities for shows, programming, and more that include various forms of recognition and benefits based on the level of support.

Each opportunity for involvement brings a unique association with The PACT Theatre Company Foundation artistry, statewide audiences, strong media presence, and dynamic record of growth. The PACT has reached over 10,000 audience members and this upcoming season is expected to be our biggest yet! By becoming a sponsor or advertiser, you and your business or family will not only receive recognition at our shows, advertising opportunities, and other exclusive perks; but most importantly, you will be able to experience professional-quality theatre created and performed here on the Gulf Coast!

Please review our corporate sponsorship packet or our advertising rate packet as a starting point, and contact us at 251.307.5056 or [development@thepactmobile.com](mailto:development@thepactmobile.com) to begin a conversation. We look forward to partnering with you!

## PAST AD LAYOUTS

### FULL PAGE



**THE STEEPLE**  
ON ST. FRANCIS

From Party To Performance,  
The Steeple Is Again Ready  
To Congregate.

BOOK NOW AT [THESTEEPLEMOBILE.COM](http://THESTEEPLEMOBILE.COM)

### HALF PAGE



We build things,  
including community.

There's more to life than work. So while we're proud of the industries we serve, we're even more honored to be part of the community. As friends, neighbors, and supporters of teams like PACT, hargrove.org.com / 877-388-8356 / [W F B](https://www.facebook.com/hargrove)

hargrove

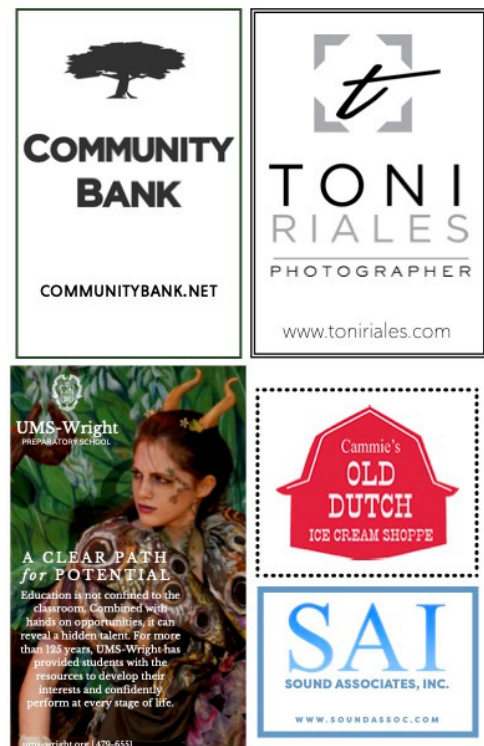
35 of the region's  
best doctors.  
One clear choice.

Premier Medical is the largest and most established Eye, Ear, Nose and Throat clinic in the region. We have the finest physicians and the latest technology to accurately diagnose and successfully treat your medical problem. Contact us today to make an appointment.

Visit us online at [www.pmg.md](http://www.pmg.md)

PREMIER MEDICAL  
EYE • EAR • NOSE • THROAT

### 1/4 PAGE



**COMMUNITY BANK**  
COMMUNITYBANK.NET

**TONI RIALES**  
PHOTOGRAPHER  
[www.toniriales.com](http://www.toniriales.com)

**UMS-Wright**  
PREPARATORY SCHOOL  
A CLEAR PATH for POTENTIAL  
Education isn't confined to the classroom. Combined with hands on opportunities, it can reveal a hidden talent. For more than 125 years, UMS-Wright has provided students with the resources to develop their interests and confidently perform at every stage of life.  
[ums-wright.org](http://ums-wright.org) | 479-6551

**Cammie's OLD DUTCH**  
ICE CREAM SHOPPE

**SAI**  
SOUND ASSOCIATES, INC.  
[WWW.SOUNDASSOC.COM](http://WWW.SOUNDASSOC.COM)

## OTHER PAST ADS



**CALAGAZPRINTING**  
Offset • Digital • Mailing

- Menus
- Business Cards
- Brochures
- Pocket Folders
- Rack Cards
- Invitations
- Post Cards
- Posters
- Program Books
- Flyers
- Envelopes

3001 Mills St. | Mobile, AL 36607  
251.478.0488 | Toll Free 877.649.8833  
[www.calagazprinting.com](http://www.calagazprinting.com)



**PHINS APPAREL**  
[www.phinsapparel.com](http://www.phinsapparel.com)

Screenprinting • Embroidery

3001 Mills St. | Mobile, AL 36607  
251.661.0369  
[www.phinsapparel.com](http://www.phinsapparel.com)



**YOUR FULL SERVICE**  
boutique florist!

**LUSH**  
floral • garden • event

1900 Commercial  
Mobile, AL 36688  
251.474.4433  
[www.lushmobile.com](http://www.lushmobile.com)



**MOBILE BALLET SUMMER 2021**  
[www.mobileballet.org](http://www.mobileballet.org) • [info@mobileballet.org](mailto:info@mobileballet.org) • 251.342.2241

**Princess Ballerina Camp**  
AGES 3-5 • Mobile: June 1-4 • Eastern Shore: June 7-10 • 10am-12noon

**Let's Dance Camp**  
AGES 4-9 • Mobile: June 7-8 • Eastern Shore: June 7-10 • 10am-12:30pm

**SUMMER INTENSIVE**  
AGE 12+ (includes 2 year of pointe training)  
Mobile Studio: June 7 - July 2 • M-F 9:30am-10:30pm

**JUNIOR INTENSIVE**  
AGE 9+ • Mobile Studio: June 21 - July 2 • M-F 10:00am-1:00pm



**SPRING AND SUMMER EVENTS**

Month of April: Rose Bloom Out  
Check Rose Watch on [bellingsrath.org](http://bellingsrath.org) for updates!

June 3-July 28: Wonderful Wednesdays  
Join us this summer for special programs on gardening, history, foraging and more! View the full schedule on [bellingsrath.org](http://bellingsrath.org). To register, call 251-973-2217.

Wednesday, June 9: Kids Gulf Discovery Day, 9 a.m. to noon  
Children of all ages will enjoy learning about the wildlife and ecology of the Gulf Coast from a variety of environmental organizations. The day will include the Environmental Studies Center's Reptile Road Show on the Great Lumps, chutes on Pearl River with Wildlife Photographer John Schaff, and presentations by scientists from the Dauphin Island Sea Lab.

**Bellingsrath**  
Gardens and Home  
251-973-2217 • [bellingsrath.org](http://bellingsrath.org)



**THE PACT THEATRE COMPANY**  
THANKS YOU FOR YOUR CONSTANT SUPPORT OF THE ARTS!

ACCEPTING APPLICATIONS FOR 2021-2022  
Visit [McGillTooLen.org](http://McGillTooLen.org)



**Namans CATERING**  
EVENT PLANNING

Is proud to support  
The PACT Theatre Company  
and it's Mission!

[www.namanscatering.com](http://www.namanscatering.com)



**BEARD EQUIPMENT CO.**

Serving you since 1970

Rental • Sales • Parts • Service  
800-848-8563 | [beardequipment.com](http://beardequipment.com)

**JOHN DEERE**



**Mobile Popcorn & Party Rentals**

251-479-2492  
[www.MobilePopcorn.com](http://www.MobilePopcorn.com)  
[events@mobilepopcorn.com](mailto:events@mobilepopcorn.com)

#eventsthatPOP

**MOBILE POPCORN**

# OUR 2021-2022 SEASON

## AVAILABLE SHOWS

Visit [thepactmobile.org](http://thepactmobile.org) for show descriptions.



NOVEMBER 4 - 21, 2021



JANUARY 27 - FEBRUARY 14, 2022



APRIL 21 - MAY 8, 2022



JULY 14 - 31, 2022

## ADVERTISING RATES

AD SIZE	AD DIMENSIONS	ONE SHOW	TWO SHOWS	THREE SHOWS	FULL SEASON
FULL PAGE	5.25(W) X 8.25(H)	\$750	\$1,200	\$1,800	\$2,400
1/2 PAGE	5.25(W) X 4.13(H)	\$500	\$800	\$1,200	\$1,600
1/4 PAGE	2.63(W) X 4.13(H)	\$250	\$400	\$600	\$800

Advertising is available for those whose sponsorships level does not include an ad in our programs or those who may not be annual sponsors but know the importance of well-placed advertising. Seen by nearly 2,500 audience members per show, The PACT's show programs provide the perfect advertising opportunity for local and regional businesses. Program advertising does not include benefits such as tickets to shows or sponsorship recognition. All ads will be printed in full color. Ads should be submitted print-ready, 300 dpi, and in pdf, png, eps, or ai format. Ready to place your ad? Email us today at [development@thepactmobile.com](mailto:development@thepactmobile.com)!

## A QUICK LOOK AT NUMBERS FROM LAST SEASON:

2020-2021

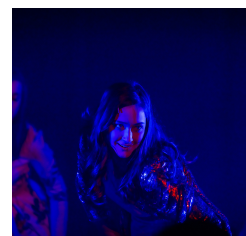
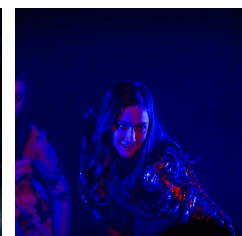
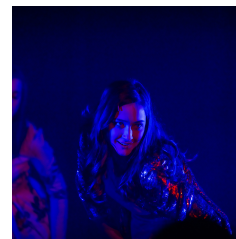
**339** students **AND ADULTS** participated in production with us

**248** students enrolled in classes or camps with us

**1000+** hours of rehearsal

**7,900+** audience members

**28** scholarships given out



## AWARDS & ACHIEVEMENTS

**JTF Texas 2021**  
Overall Outstanding Production - Children of Eden Jr.  
Outstanding Performance by an Individual - Reid Williams

**JTF Online Extravaganza 2021**  
Overall Outstanding Production - Disney's Moana Jr.  
The New Works Showcase - Disney's Freaky Friday  
Excellence in Dance - Disney's Moana Jr.  
All Festival Individual Performance Award - Reid Williams

**JTF Atlanta 2020**  
Excellence in Music - Disney's The Lion King Jr.

**JTF Atlanta 2019**  
Excellence in Dance - Guys & Dolls Jr.

**NAPPIE AWARD 2019 Winner**  
Best Theater Group  
Best Theatrical Singer - Rainey Tanner

**NAPPIE AWARD 2020 Winner**  
Best Performance of the Year - Frozen Jr.  
Best Local Actor - Kensey LaCroix

**NAPPIE AWARD 2021 Winner**  
Best Theater Group - Children's  
Best Performance of the Year - Descendants  
Best Local Actor - Lillian Odom



# THE PACT THEATRE COMPANY

## CURRENT & PAST SPONSORS



THE PACT THEATRE COMPANY  
5025 Cottage Hill Road, Mobile, AL 36609  
development@thepactmobile.com | 251-307-5056  
www.thepactmobile.org